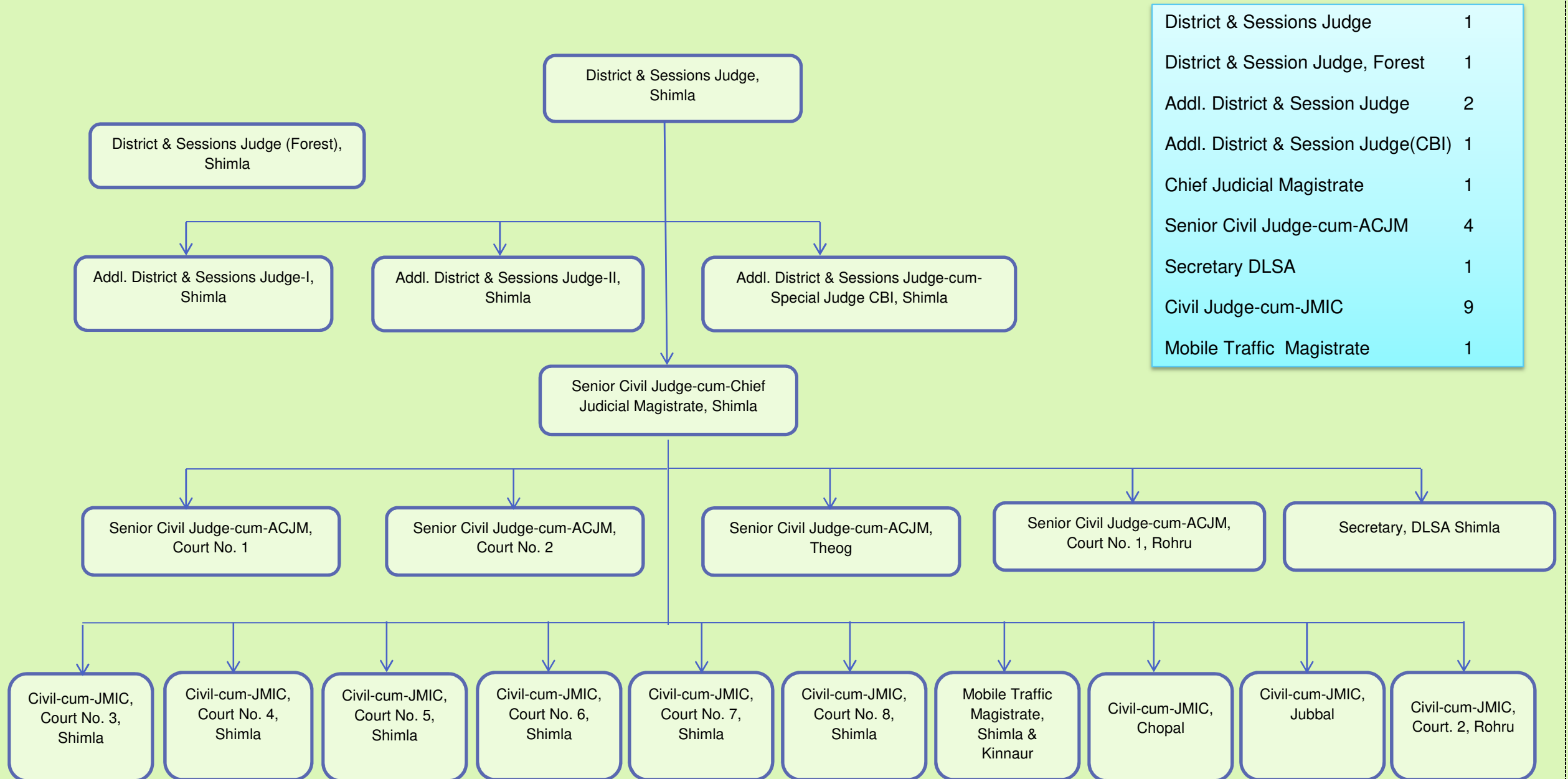


Administrative Setup of the Judicial Officers of the Civil & Sessions Division Shimla



| | |
|-------------------------------------|---|
| District & Sessions Judge | 1 |
| District & Session Judge, Forest | 1 |
| Addl. District & Session Judge | 2 |
| Addl. District & Session Judge(CBI) | 1 |
| Chief Judicial Magistrate | 1 |
| Senior Civil Judge-cum-ACJM | 4 |
| Secretary DLSA | 1 |
| Civil Judge-cum-JMIC | 9 |
| Mobile Traffic Magistrate | 1 |



District & Session Judge, Shimla



District & Session Judge Forests, Shimla



Addl. District & Session Judge -I, Shimla



Addl. District & Session Judge -II, Shimla



Addl. District & Session Judge(CBI), Shimla



Chief Judicial Magistrate, Shimla



Senior Civil Judge(ACJM) 1, Shimla



Senior Civil Judge(ACJM) 2, Shimla



Senior Civil Judge(ACJM), Theoa



Senior Civil Judge(ACJM) 1, Rohru



Secretary DLSA, Shimla



Civil-cum-JMIC, Court No. 3, Shimla



Civil-cum-JMIC, Court No. 4, Shimla



Civil-cum-JMIC, Court No. 5, Shimla



Civil-cum-JMIC, Court No. 6, Shimla



Civil-cum-JMIC, Court No. 7, Shimla



Civil-cum-JMIC, Court No. 8, Shimla



Mobile Traffic Magistrate, Shimla & Kinnaur



Civil-cum-JMIC, Chopal



Civil-cum-JMIC, Jubbal



Civil-cum-JMIC, Court. 2, Rohru

| | |
|-------------------------------------|---|
| District & Sessions Judge | 1 |
| District & Session Judge, Forest | 1 |
| Addl. District & Session Judge | 2 |
| Addl. District & Session Judge(CBI) | 1 |
| Chief Judicial Magistrate | 1 |
| Senior Civil Judge-cum-ACJM | 4 |
| Secretary DLSA | 1 |
| Civil Judge-cum-JMIC | 9 |
| Mobile Traffic Magistrate | 1 |