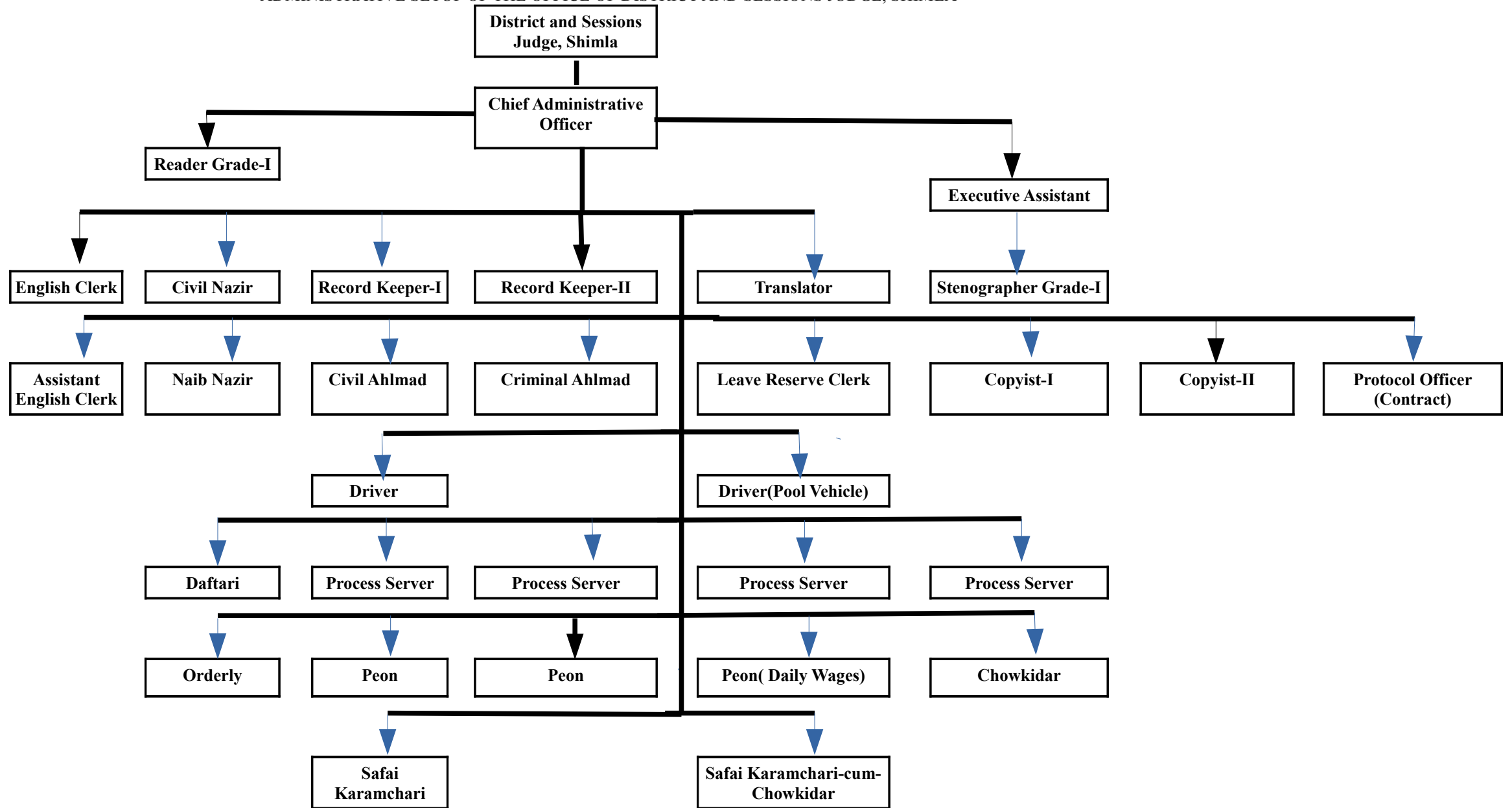
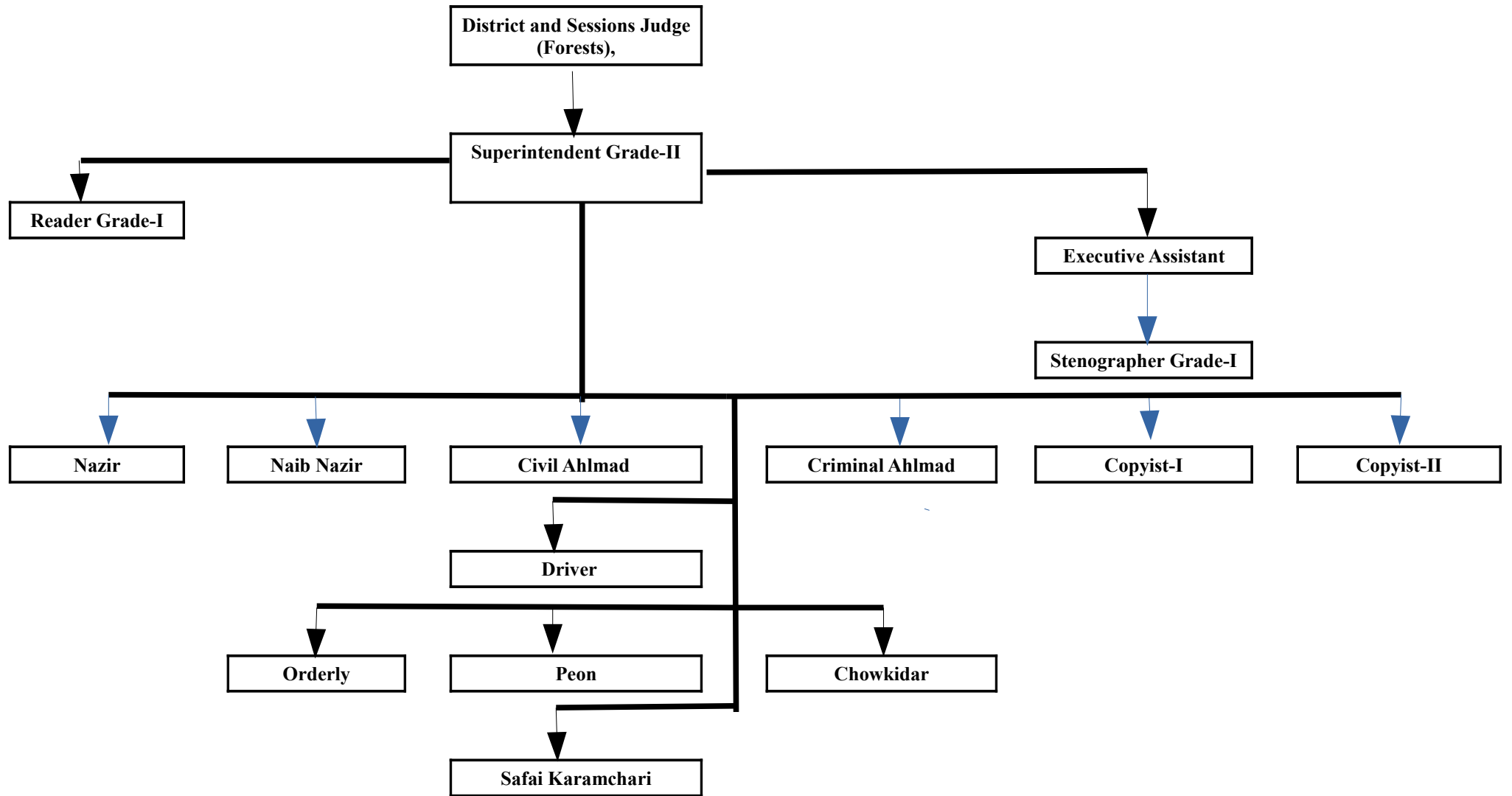


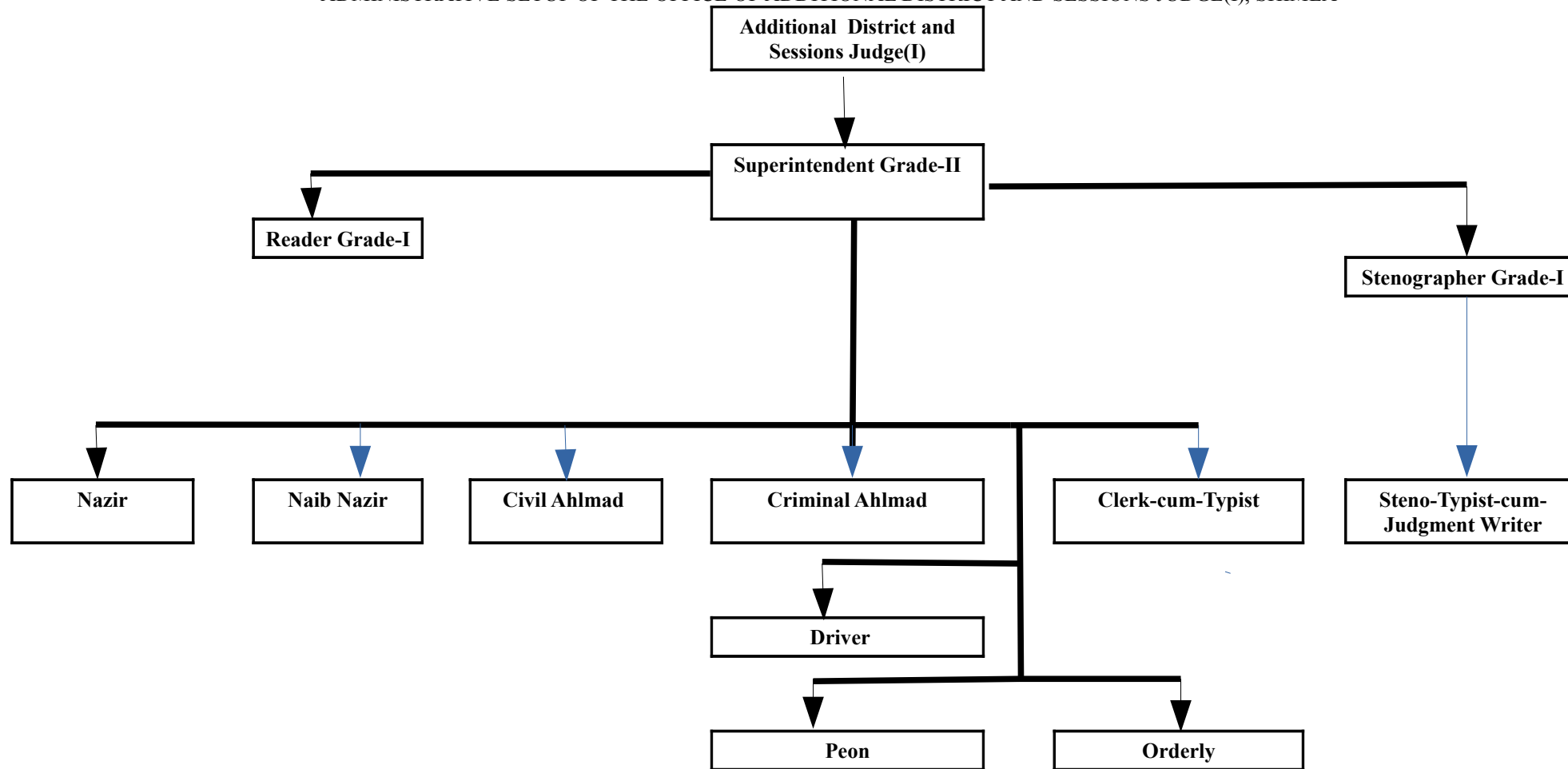
ADMINISTRATIVE SETUP OF THE OFFICE OF DISTRICT AND SESSIONS JUDGE, SHIMLA



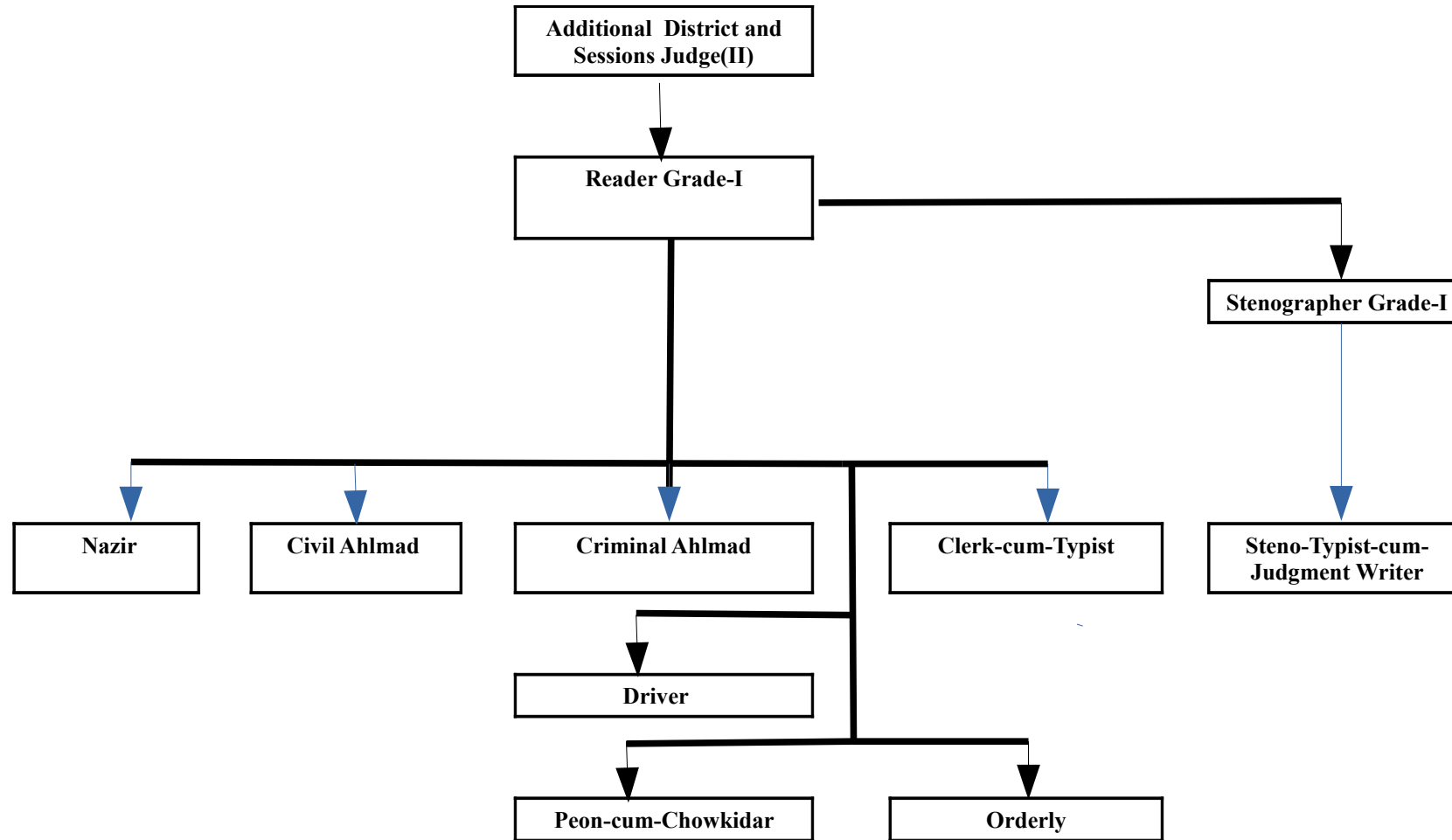
ADMINISTRATIVE SETUP OF THE OFFICE OF DISTRICT AND SESSIONS JUDGE(FORESTS), SHIMLA



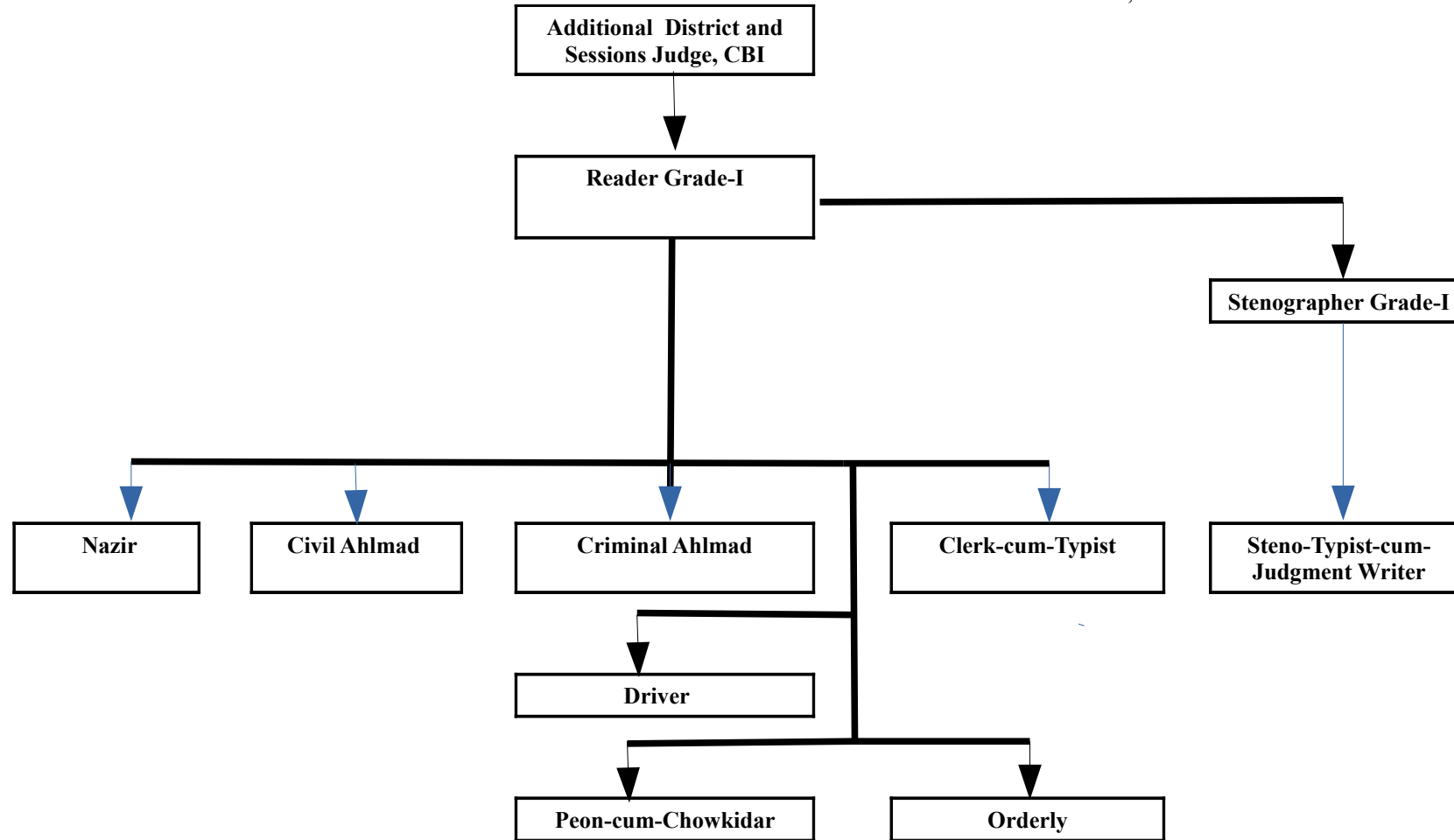
ADMINISTRATIVE SETUP OF THE OFFICE OF ADDITIONAL DISTRICT AND SESSIONS JUDGE(I), SHIMLA



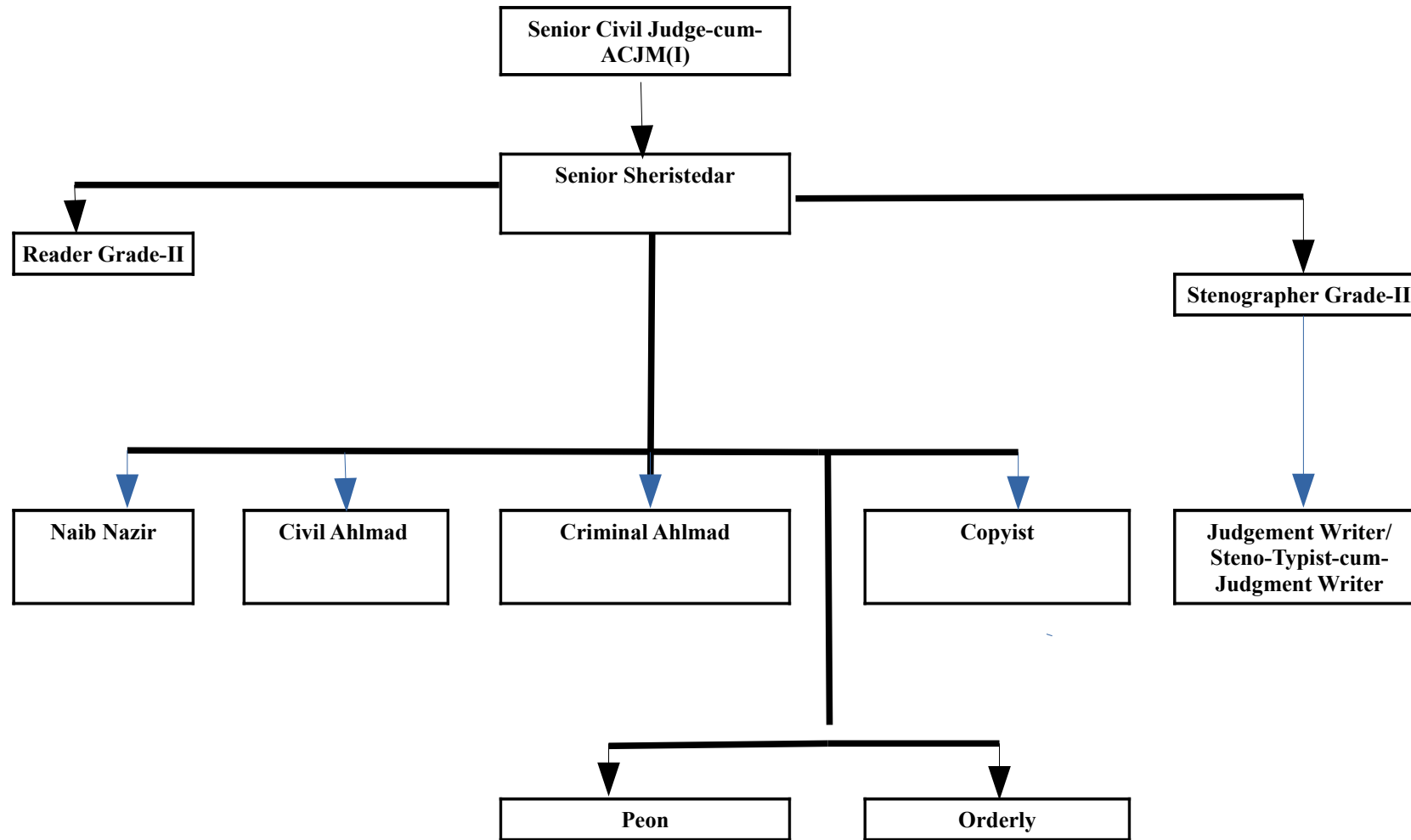
ADMINISTRATIVE SETUP OF THE OFFICE OF ADDITIONAL DISTRICT AND SESSIONS JUDGE(II), SHIMLA



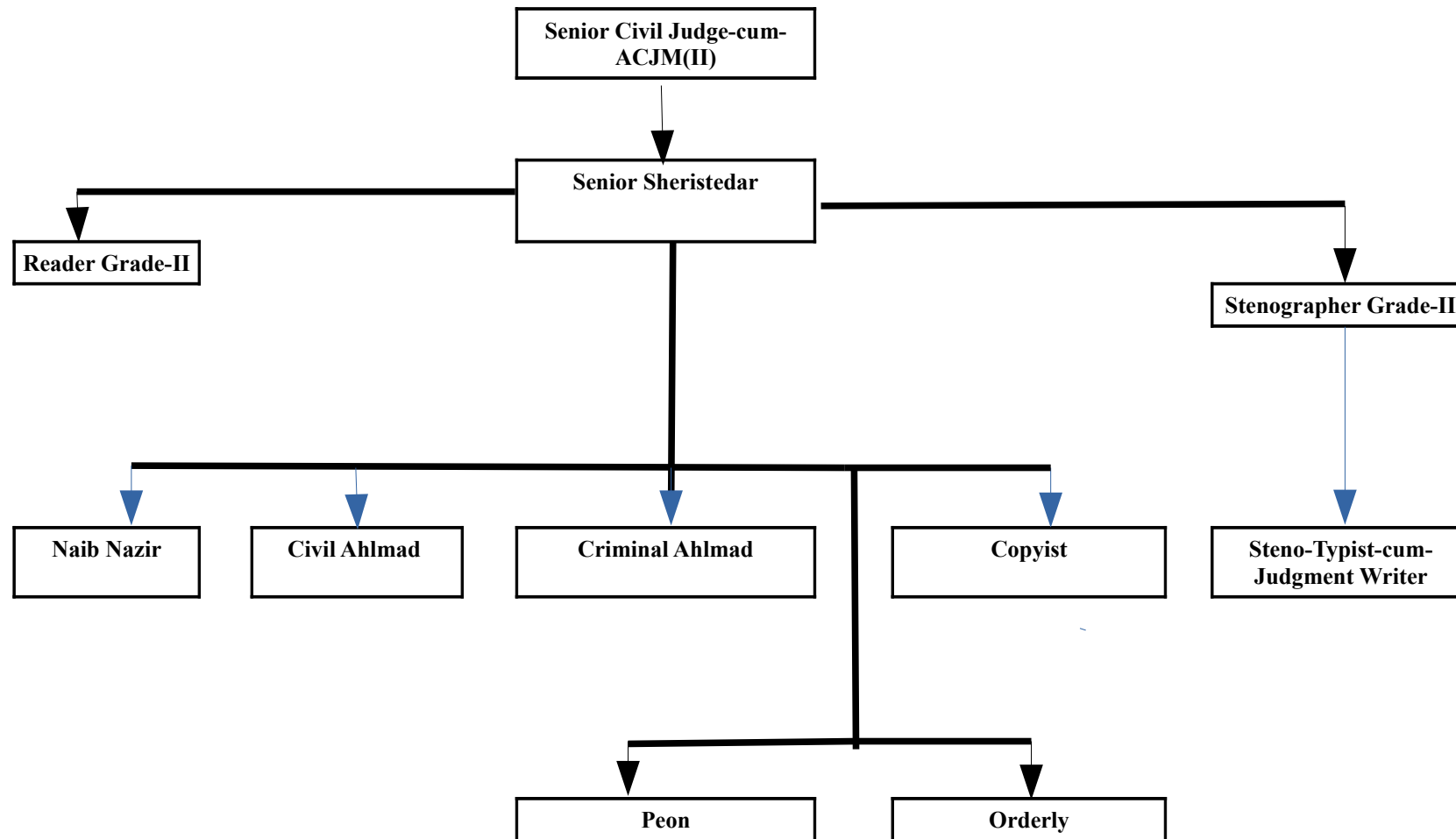
ADMINISTRATIVE SETUP OF THE OFFICE OF ADDITIONAL DISTRICT AND SESSIONS JUDGE, CBI, SHIMLA



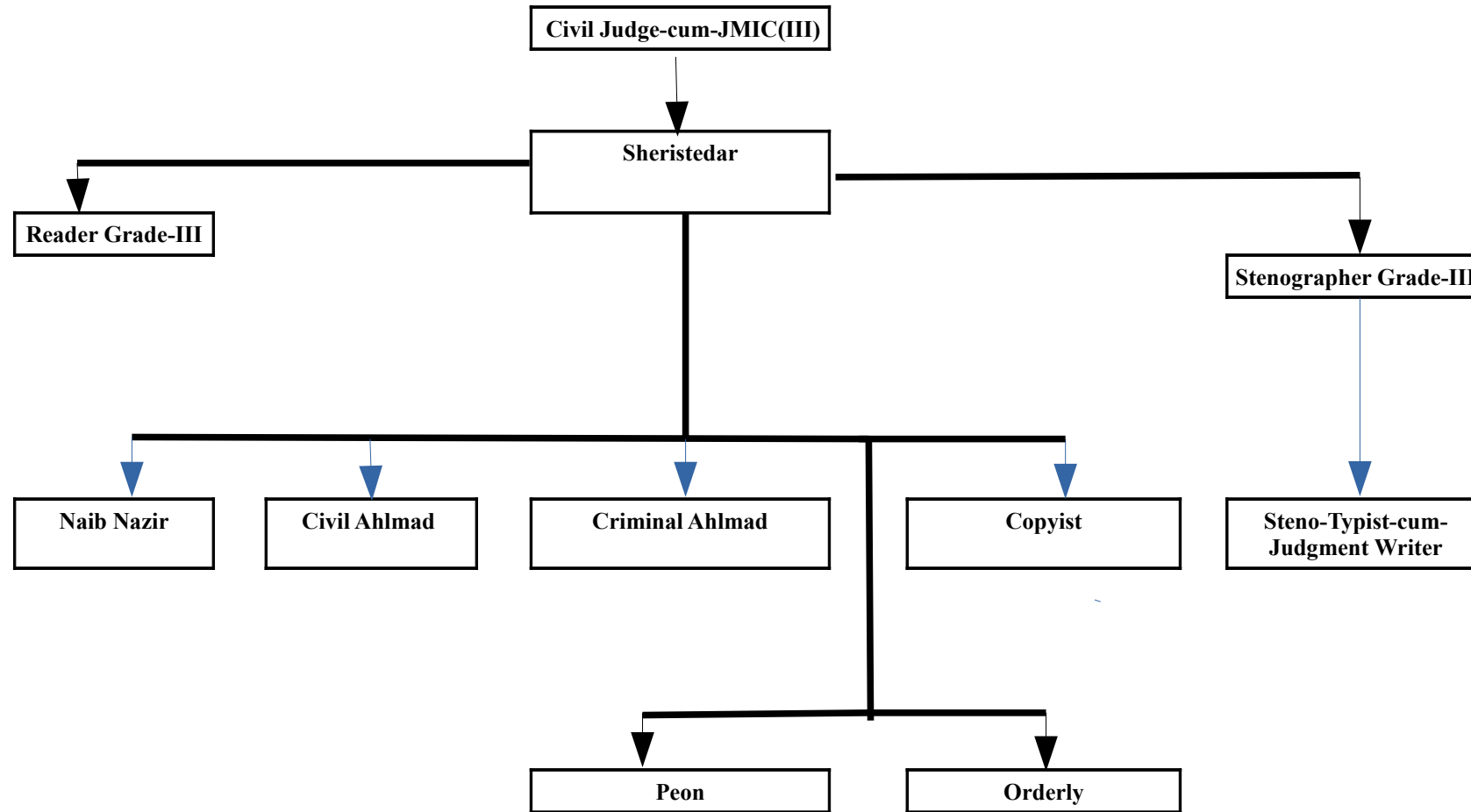
ADMINISTRATIVE SETUP OF THE OFFICE OF SENIOR CIVIL JUDGE-CUM-ACJM(I), SHIMLA



ADMINISTRATIVE SETUP OF THE OFFICE OF SENIOR CIVIL JUDGE-CUM-ACJM(II), SHIMLA

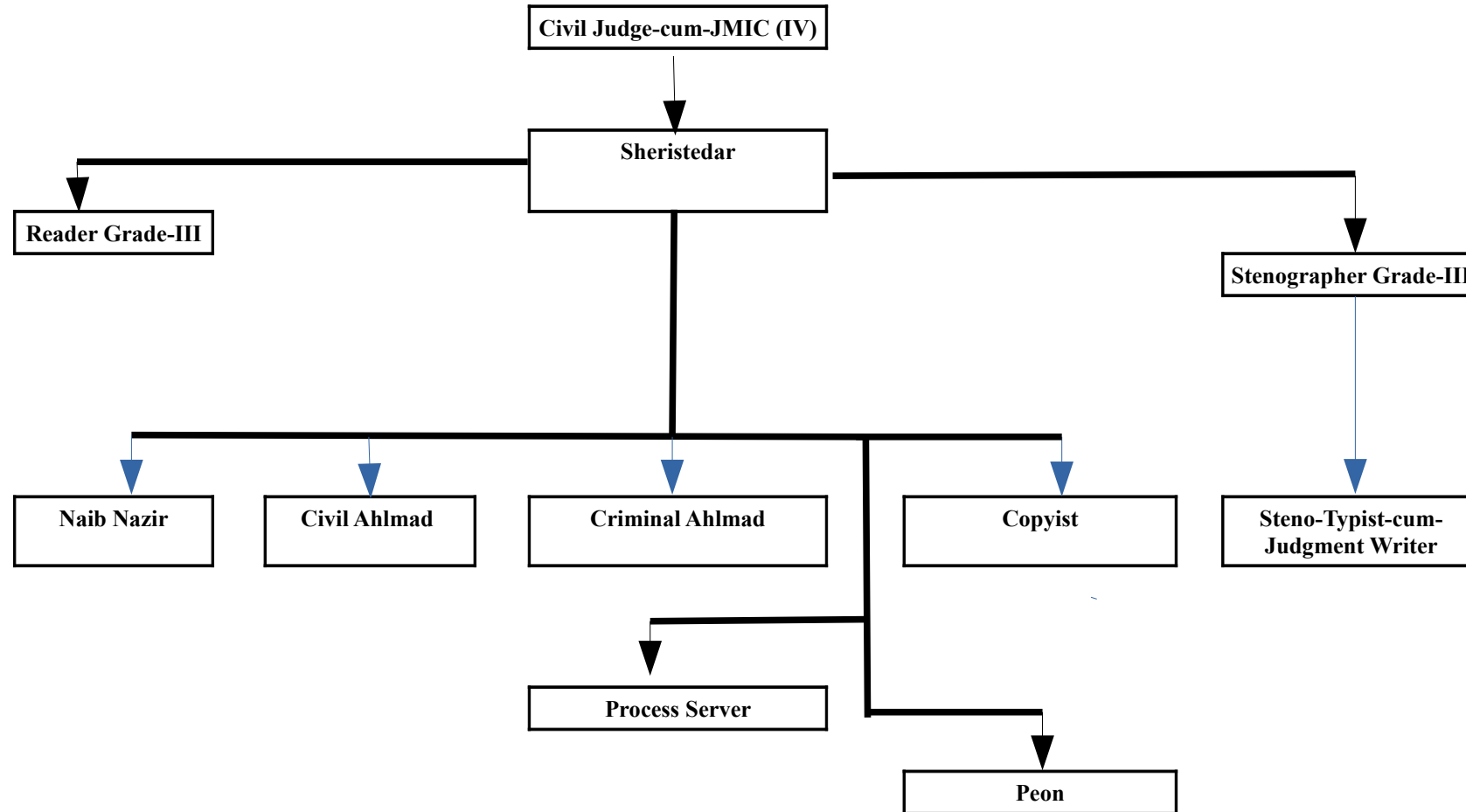


ADMINISTRATIVE SETUP OF THE OFFICE OF CIVIL JUDGE-CUM-JMIC(III), SHIMLA

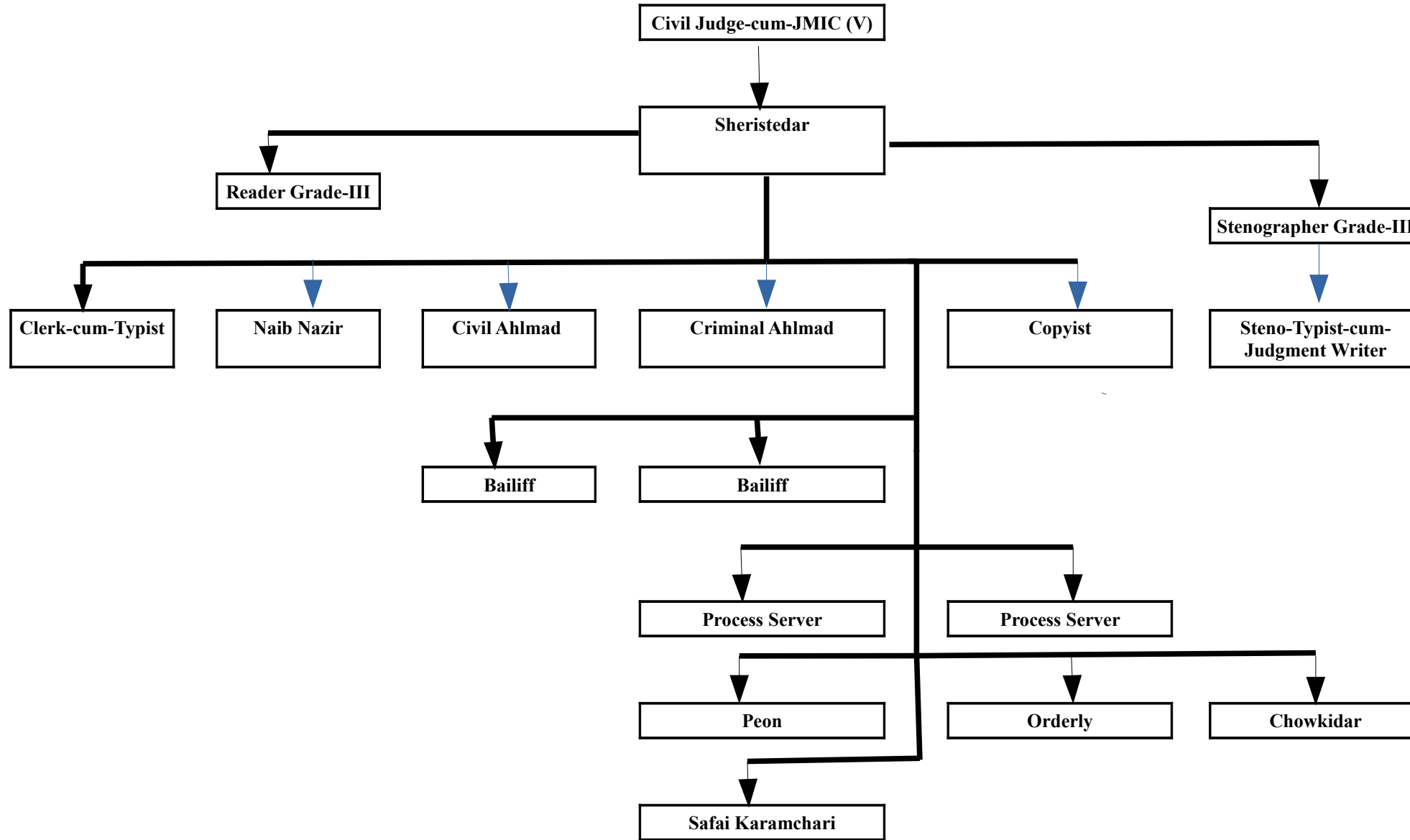




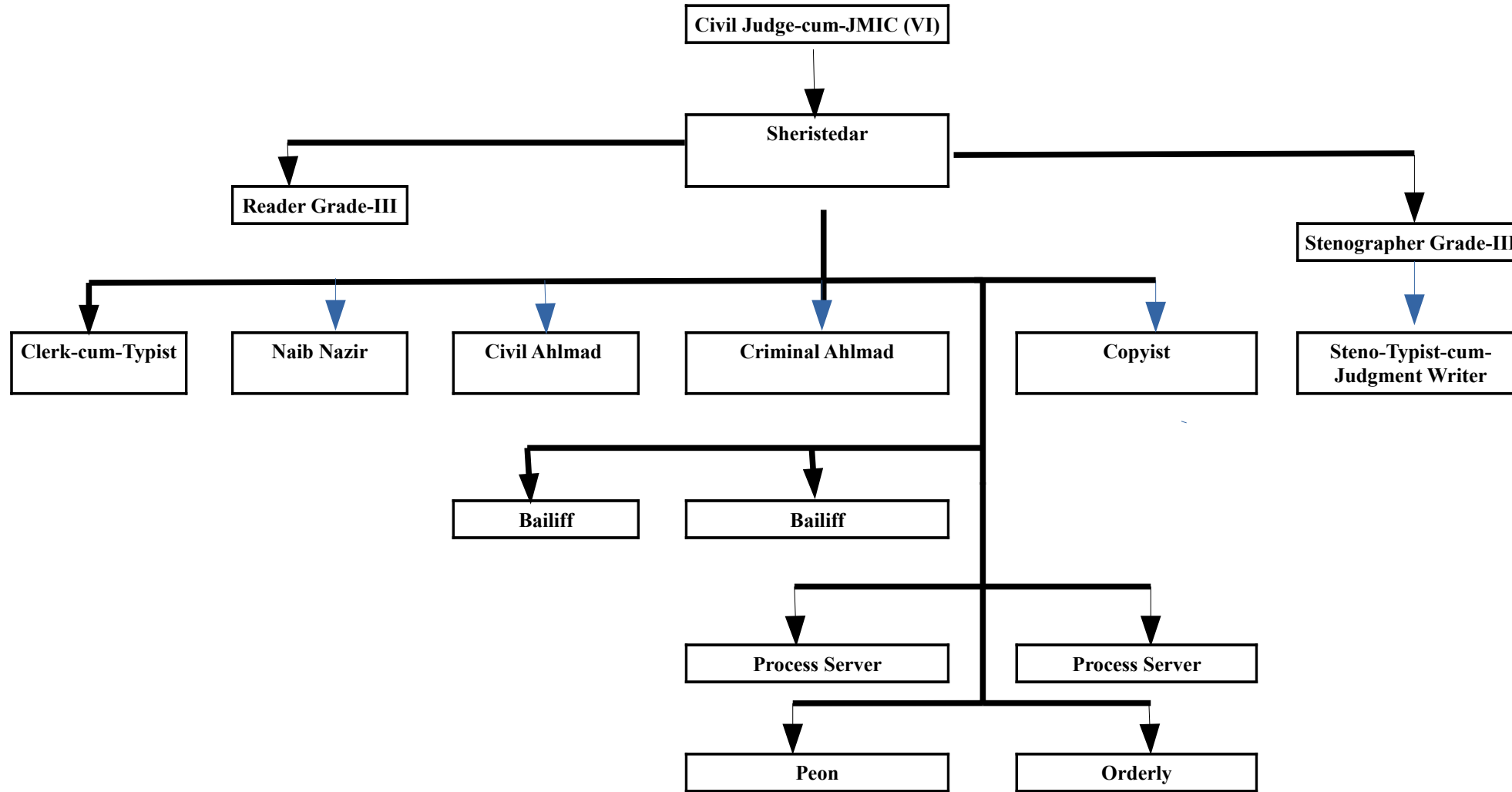
ADMINISTRATIVE SETUP OF THE OFFICE OF CIVIL JUDGE-CUM-JMIC(IV), SHIMLA



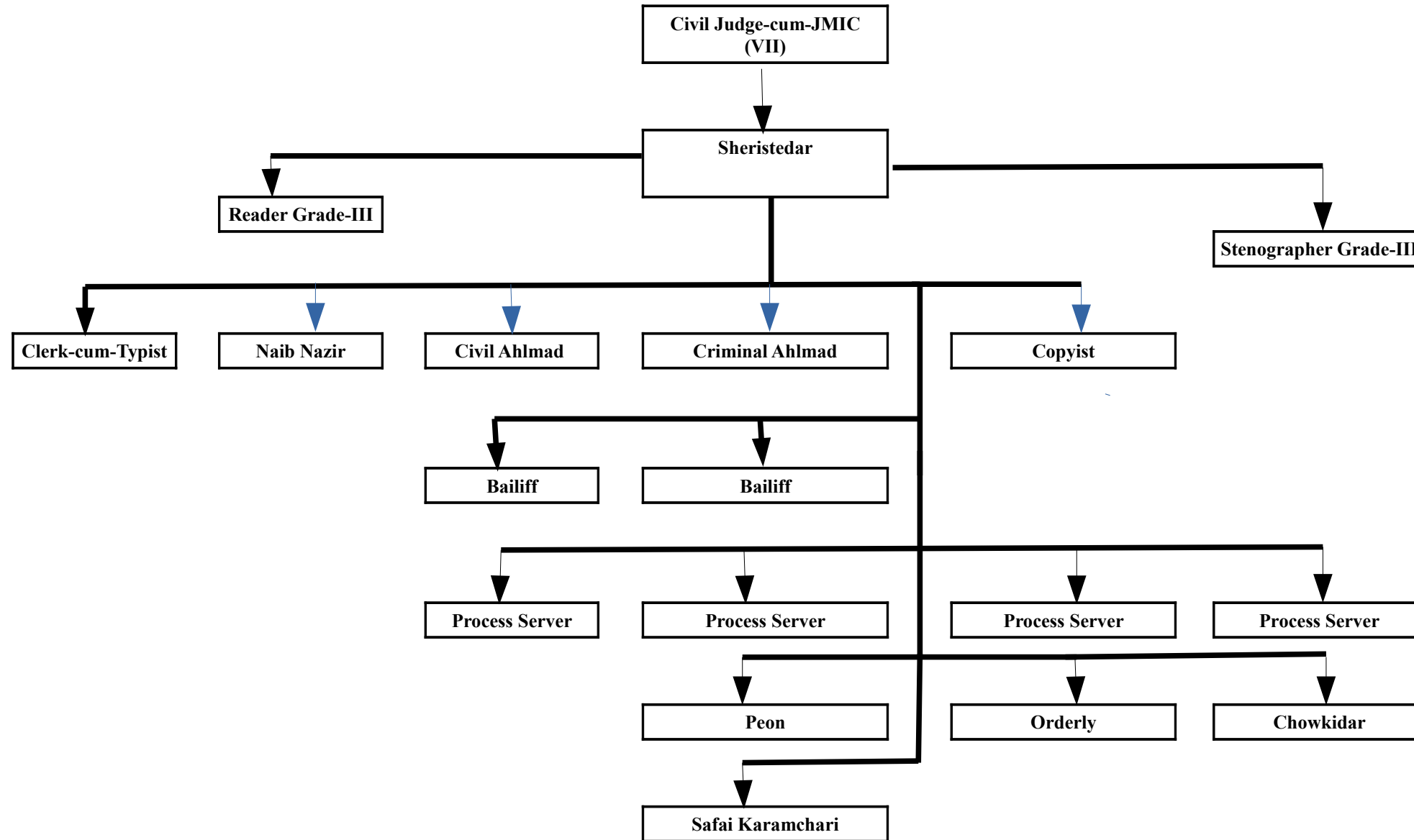
ADMINISTRATIVE SETUP OF THE OFFICE OF CIVIL JUDGE-CUM-JMIC(V), SHIMLA



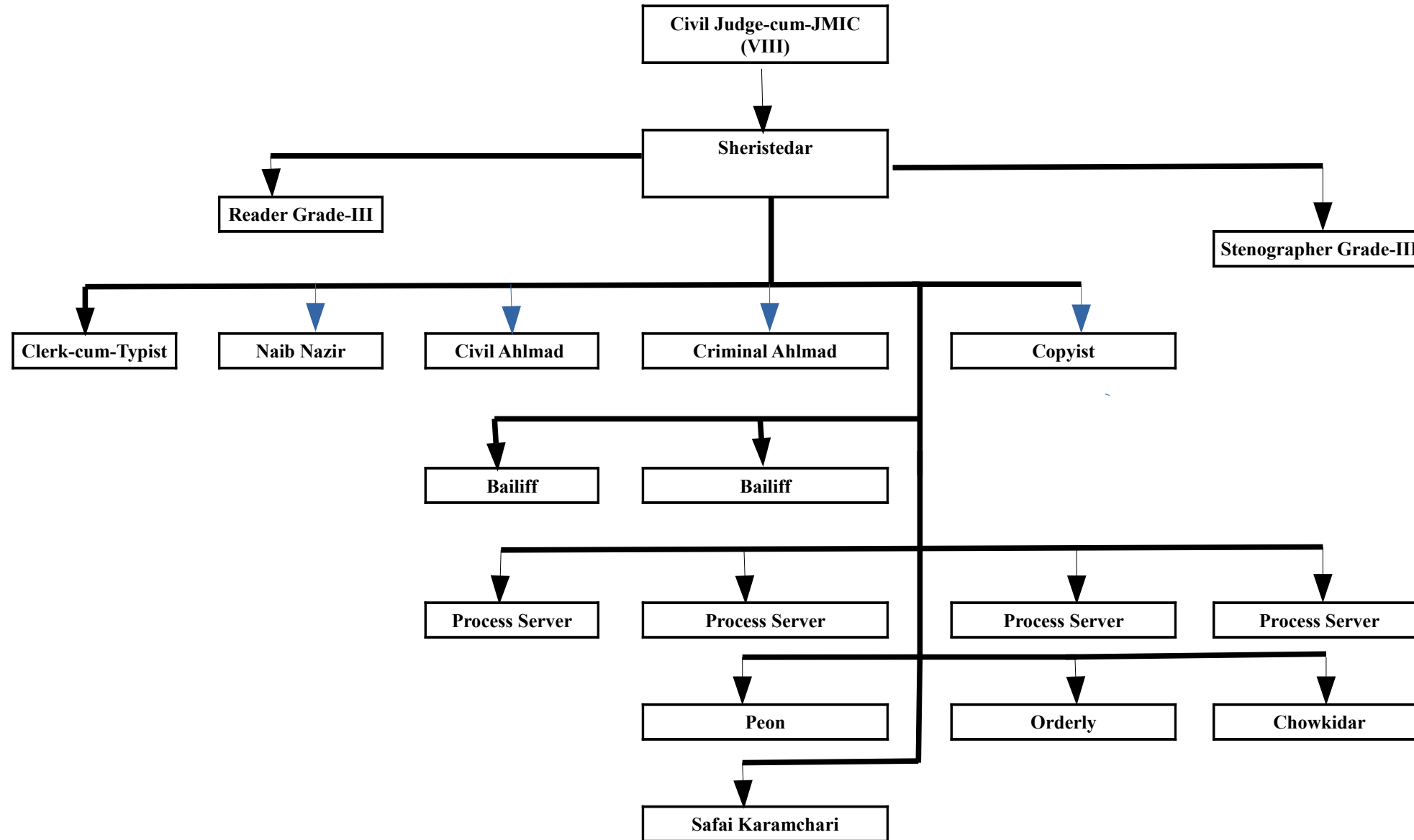
ADMINISTRATIVE SETUP OF THE OFFICE OF CIVIL JUDGE-CUM-JMIC(VI), SHIMLA



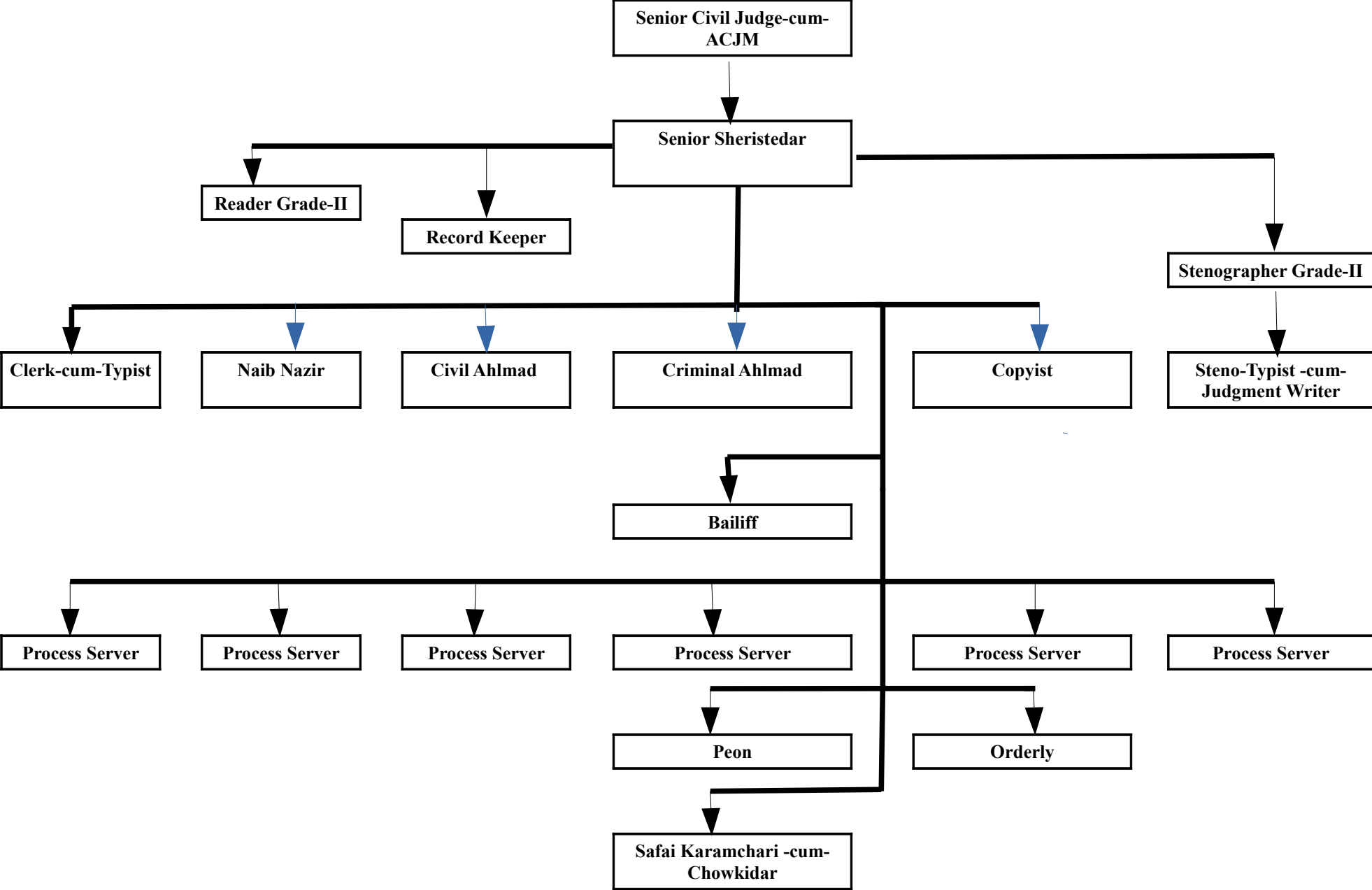
ADMINISTRATIVE SETUP OF THE OFFICE OF CIVIL JUDGE-CUM-JMIC(VII), SHIMLA



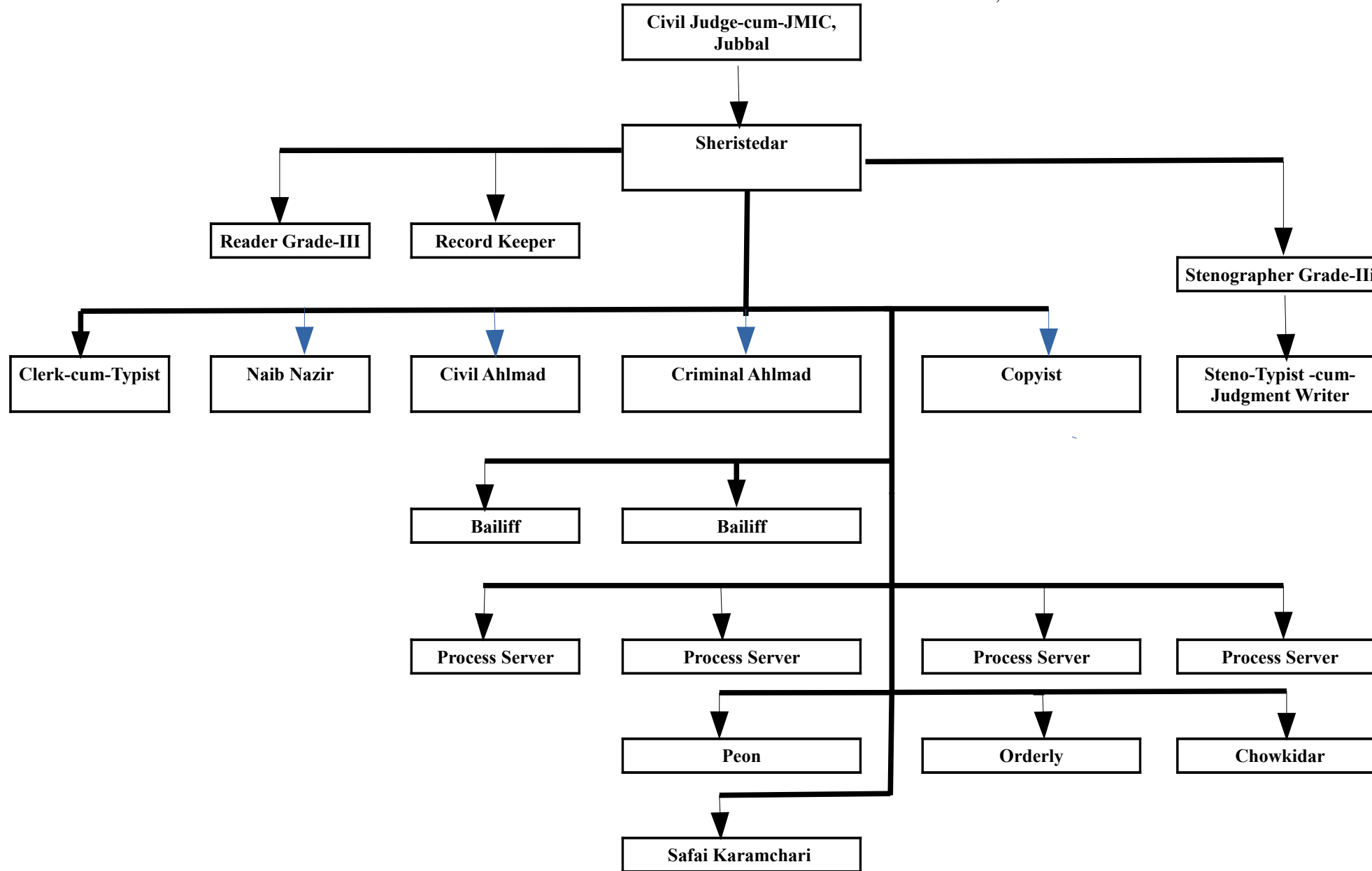
ADMINISTRATIVE SETUP OF THE OFFICE OF CIVIL JUDGE-CUM-JMIC(VIII), SHIMLA



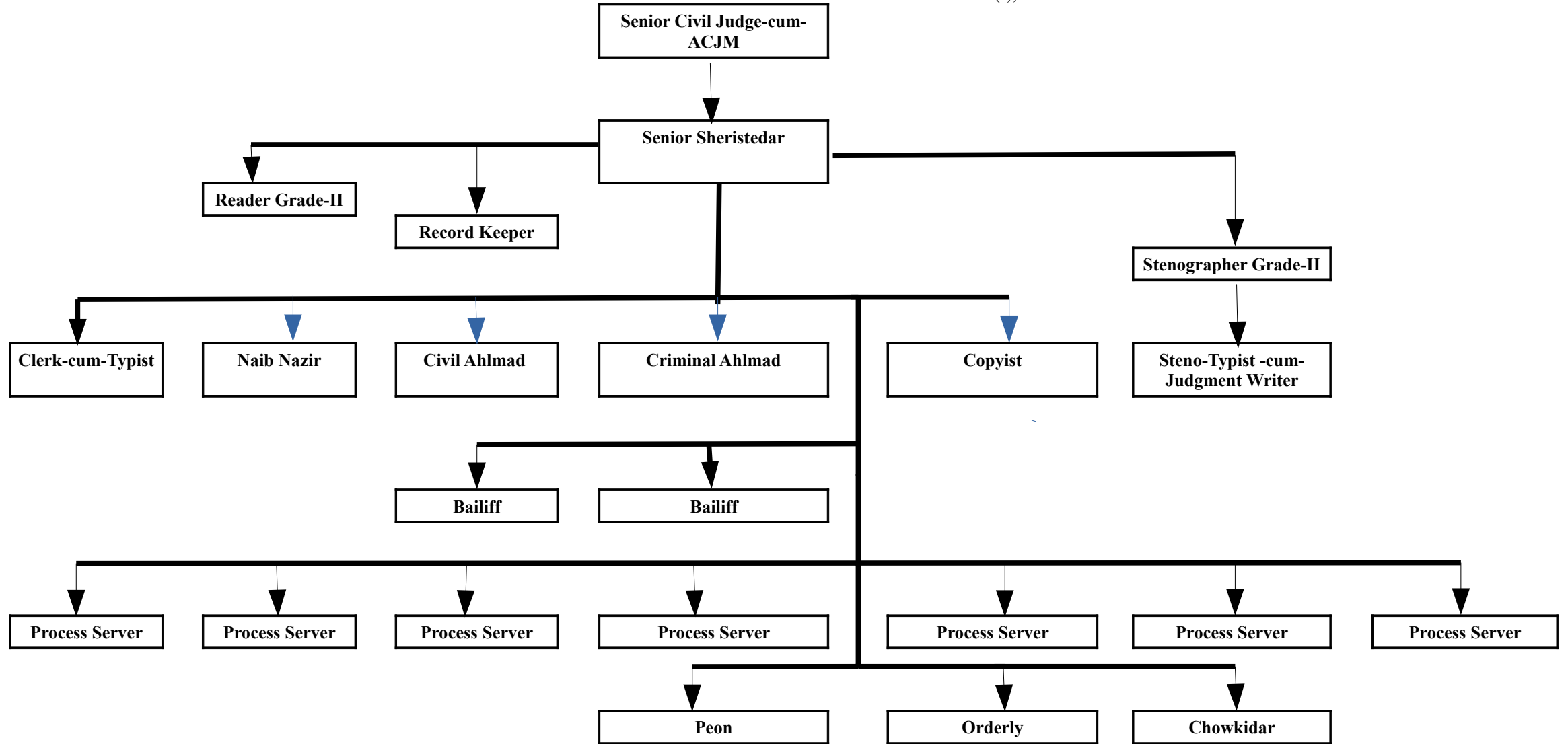
ADMINISTRATIVE SETUP OF THE OFFICE OF SENIOR CIVIL JUDGE-CUM-ACJM(I), THEOG



ADMINISTRATIVE SETUP OF THE OFFICE OF CIVIL JUDGE-CUM-JMIC, JUBBAL

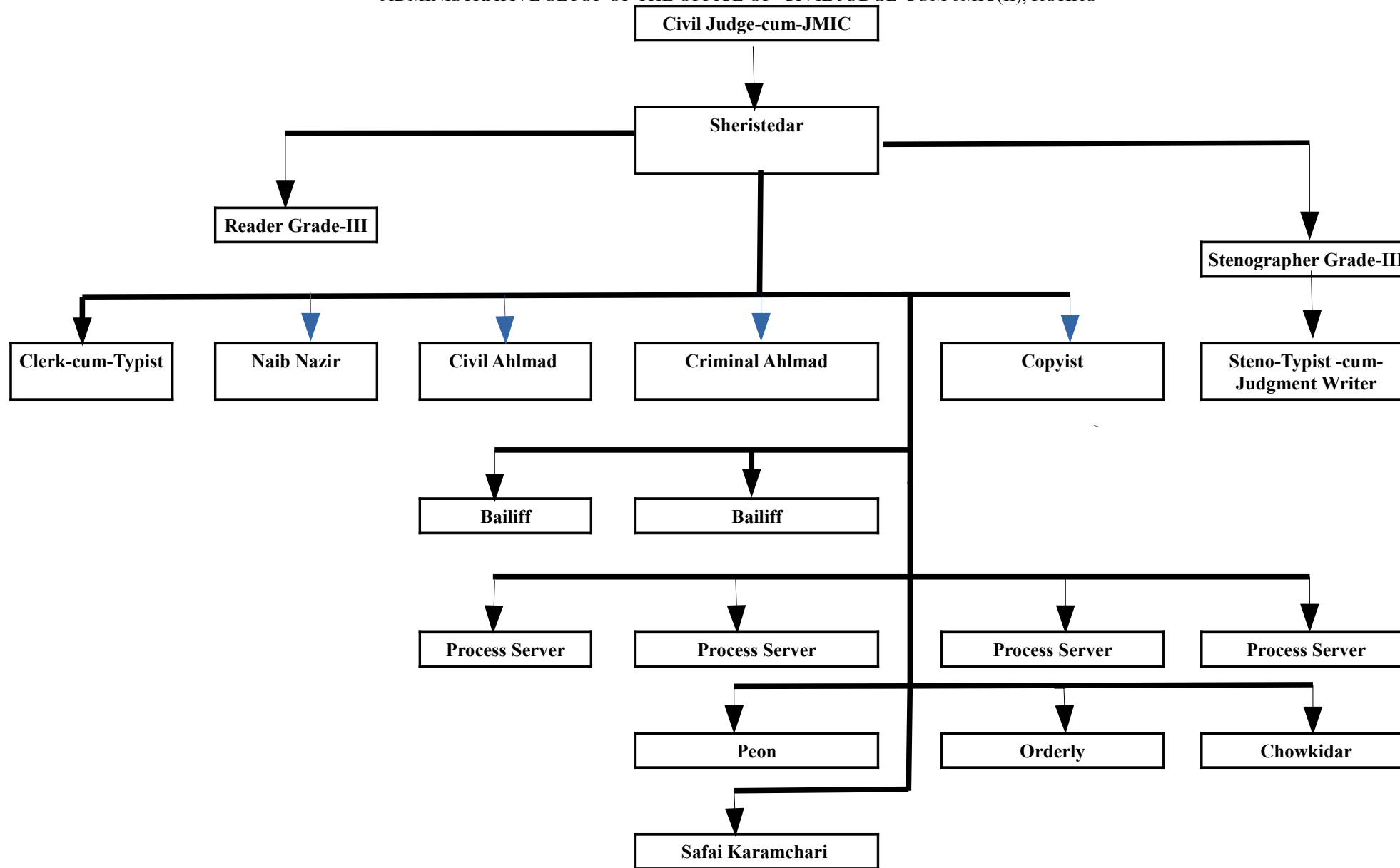


ADMINISTRATIVE SETUP OF THE OFFICE OF SENIOR CIVIL JUDGE-CUM-ACJM(I), ROHRU

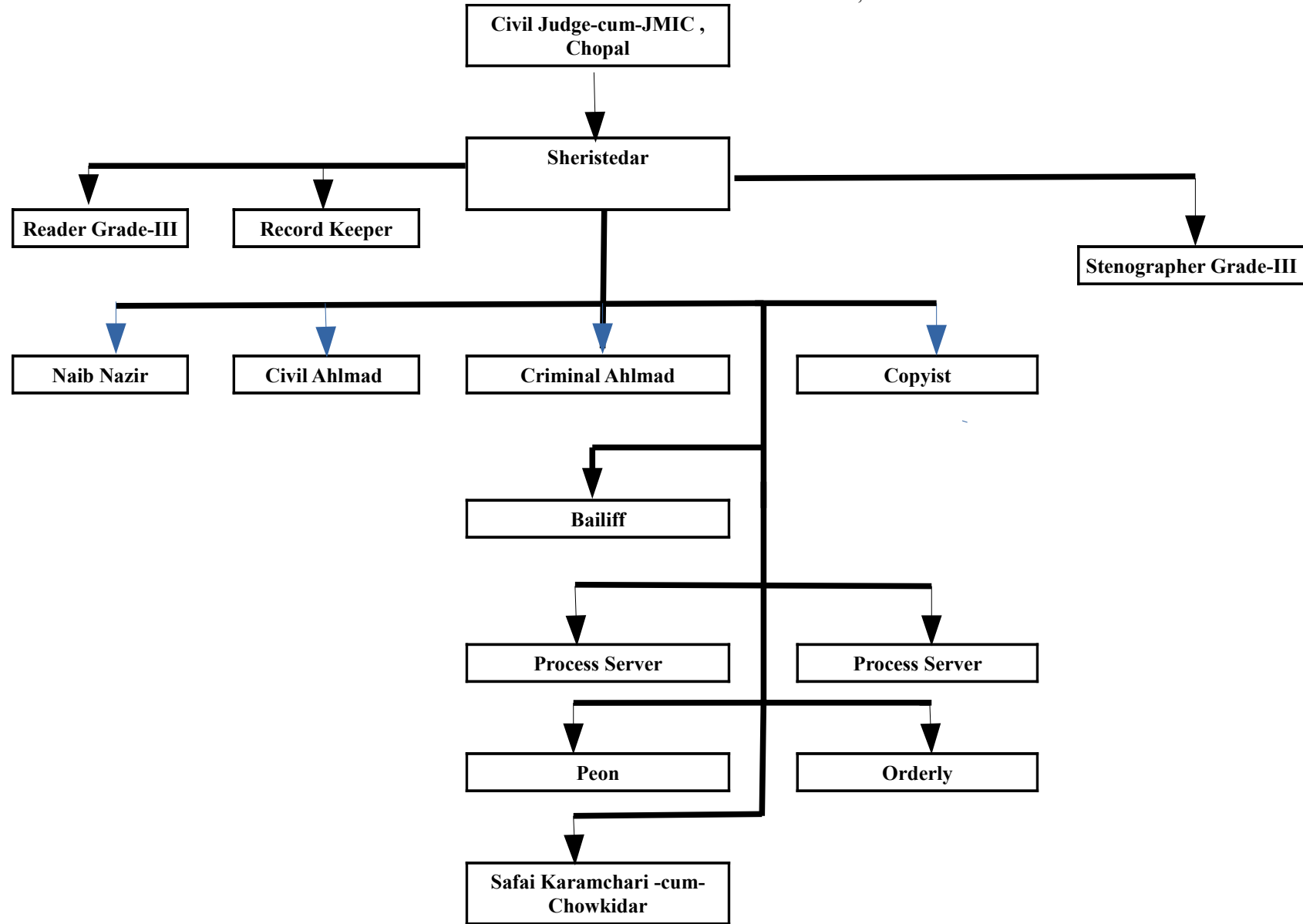




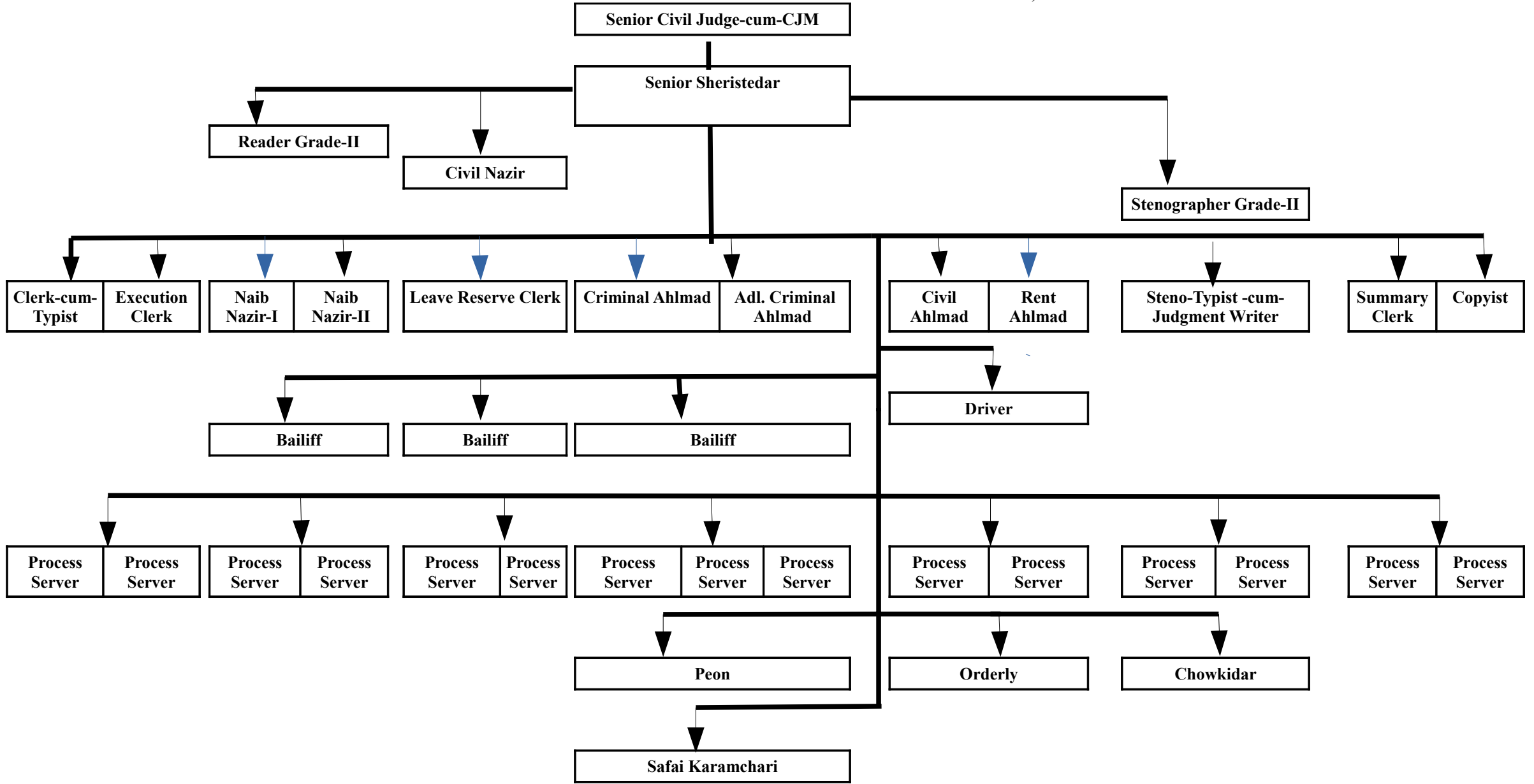
ADMINISTRATIVE SETUP OF THE OFFICE OF CIVIL JUDGE-CUM-JMIC(II), ROHRU



ADMINISTRATIVE SETUP OF THE OFFICE OF CIVIL JUDGE-CUM-JMIC, CHOPAL



ADMINISTRATIVE SETUP OF THE OFFICE OF SENIOR CIVIL JUDGE-CUM-CJM, SHIMLA



ADMINISTRATIVE SETUP OF THE OFFICE OF MOBILE TRAFFIC MAGISTRATE

